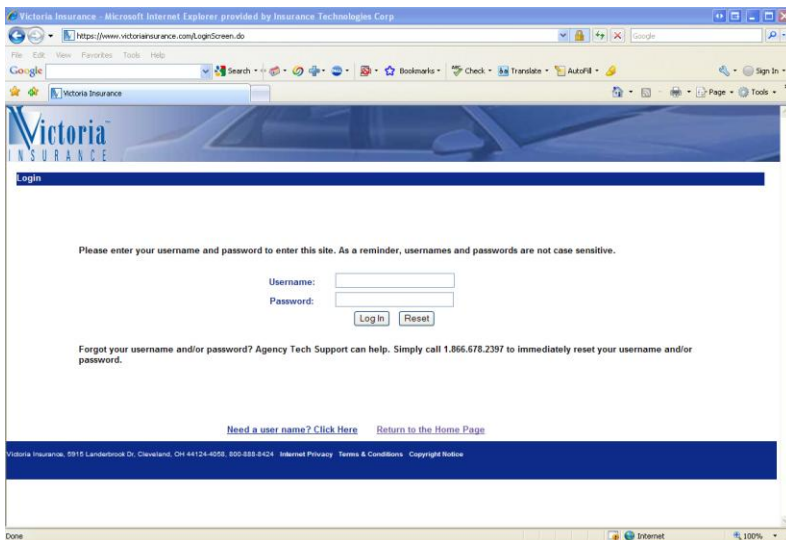
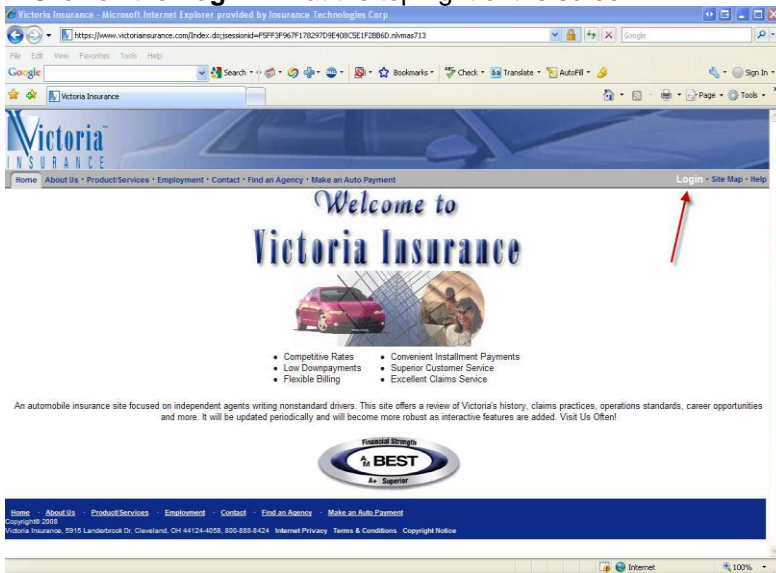
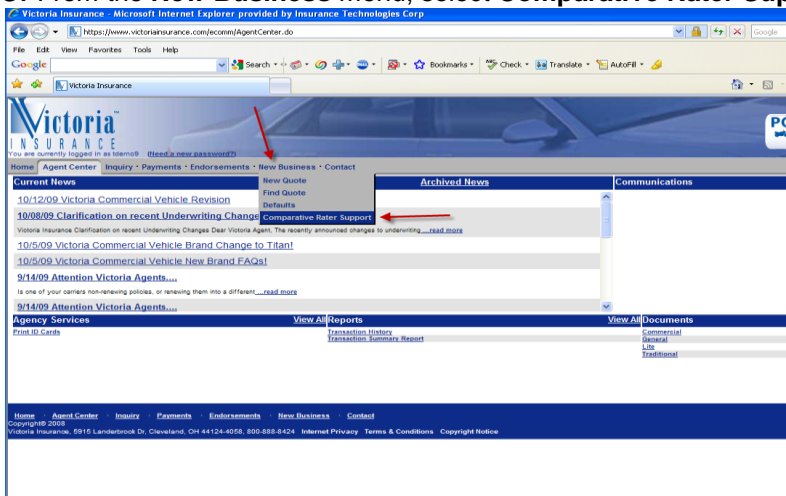


# Victoria Insurance Bridge Instructions

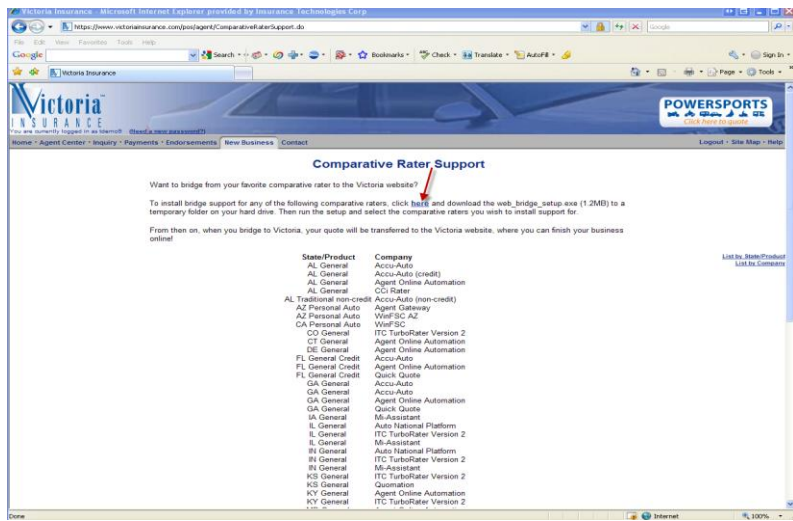
1. Log into Victoria's web site: <https://www.victoriainsurance.com>
2. Click on the **Login** link at the top right of the screen.



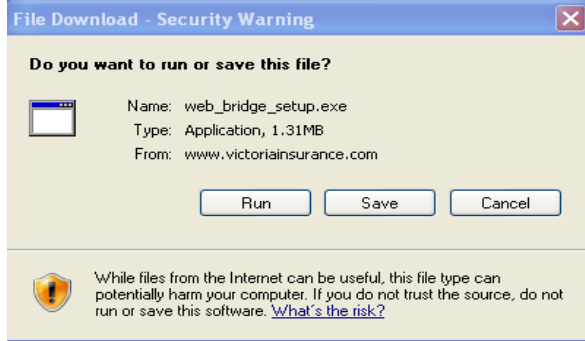
3. From the **New Business** menu, select **Comparative Rater Support**.



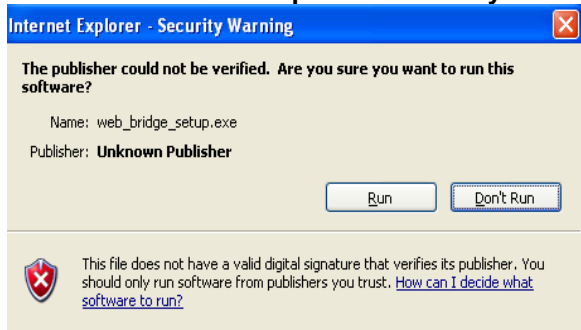
4. Follow the instructions on the next screen (there is a **click here** link to download the bridge setup file).



5. On the **File Download – Security Warning** box that appears, click on **Run**. The download will begin.

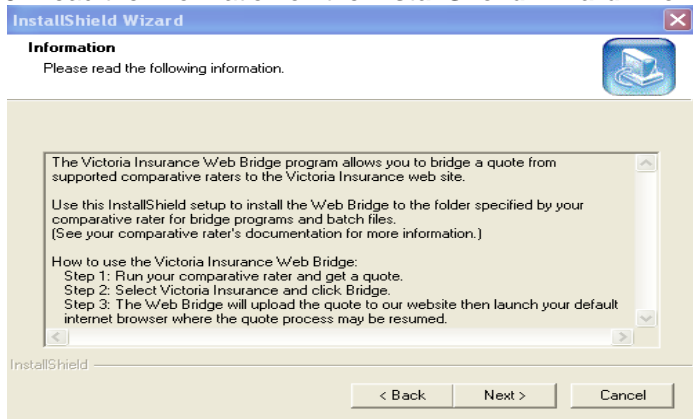


6. When the **Internet Explorer – Security Warning** box appears, click on **Run**.

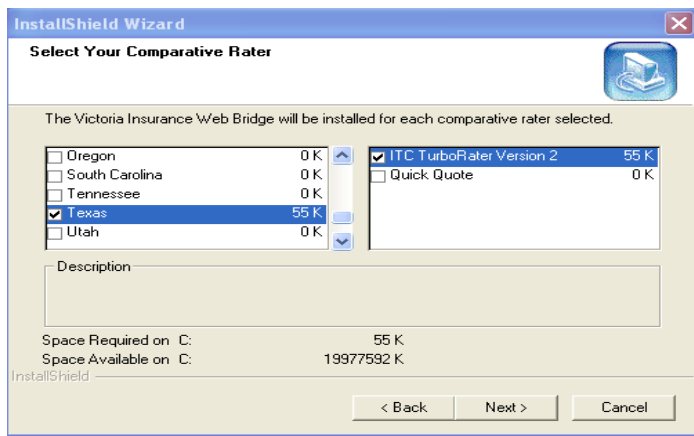


7. Click on **Next** from the **InstallShield Wizard - Welcome** screen.

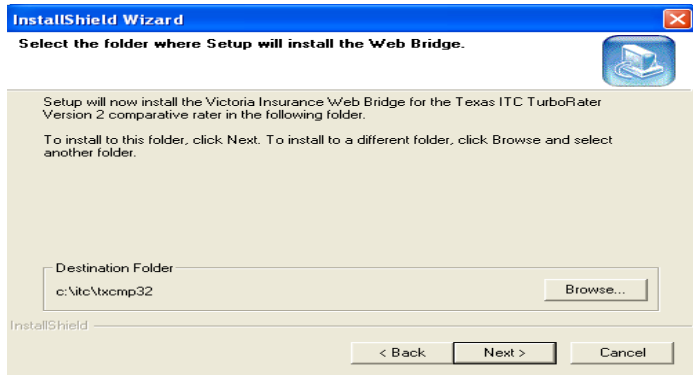
8. Read the information on the **InstallShield Wizard Information** screen and then click on **Next**.



9. You will then be asked to select your state and comparative rater (place a check mark next to your state and ITC TurboRater – uncheck the other Comparative raters). Then click on the **Next** button.



10. The default **Destination Folder** path where the Victoria bridge file will be installed is already displayed (this is the location of your ITC Comparative Rater). If your ITC Comparative Rater is installed to another location, click on the **Browse** button to find it.



11. Click on **Finish** once the installation is complete.

12. You may now close the Victoria Insurance website and open your ITC Comparative Rater to bridge to Victoria.